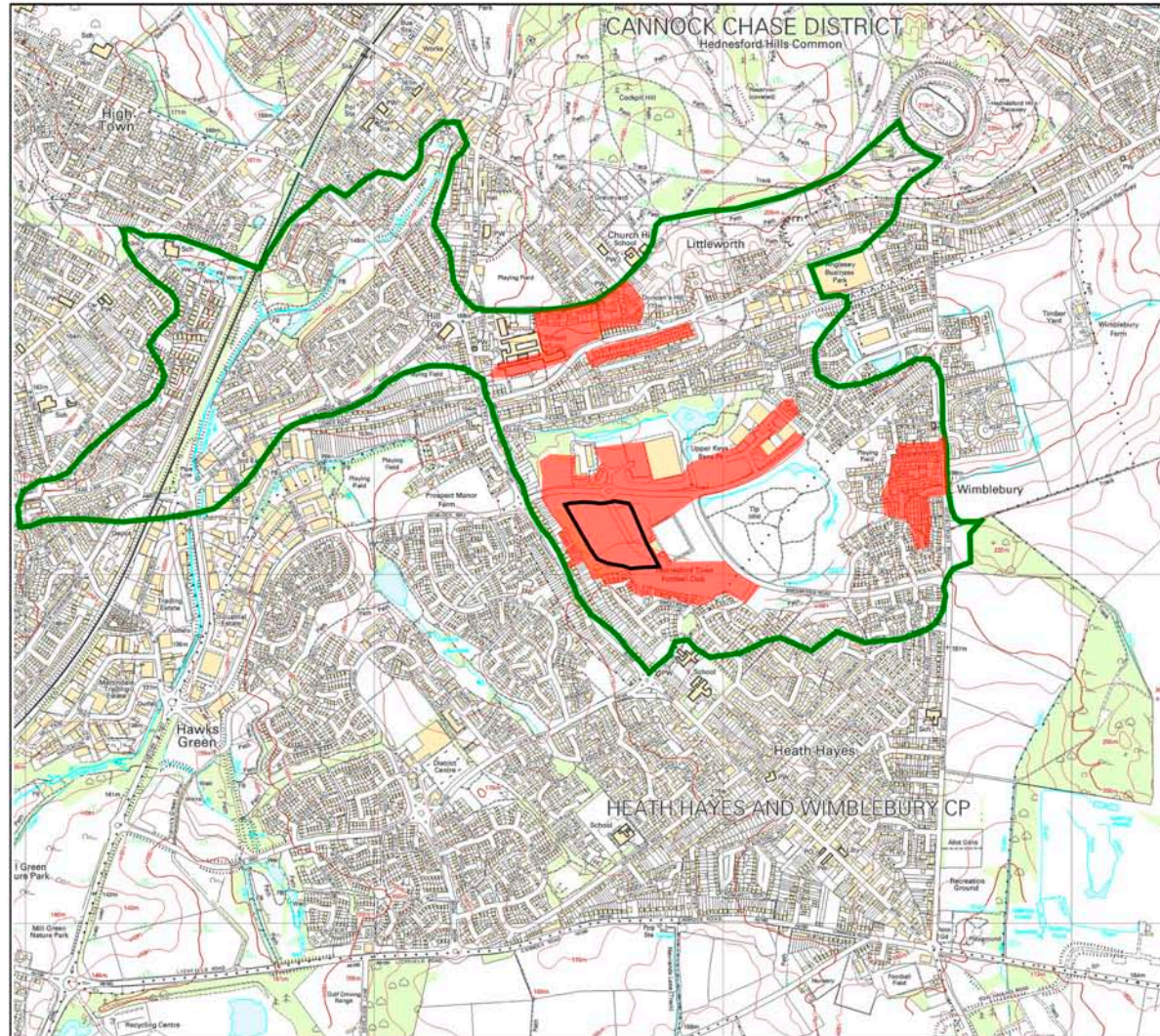




# GREENWAY

SUSTAINABLE  
DESIGN  
INNOVATION

Landscape Architects



## LEGEND






-  **Zones of Visual Influence:**  
Areas from which the proposed development can be seen allowing for landform, vegetation and the built environment.
-  **Visual Envelope:**  
Potential area from which the proposed development could be seen.
-  **Approximate Development Boundary**
-  North
-  1 Kilometre

Fig.9 Zones of Visual Influence